

## Audio-visual Indicators

OPERATION MODE DEFINITION	RED LED STATUS	SOUND
Power up	Fast flashing	Chirp once when wireless module installed and connected. Chirp 3 times when wireless module installed but NOT connected.
Alarm functioning correctly [standby]	One flash every 40 seconds	-
Low battery warning	One flash every 40 seconds	One chirp every 40 seconds, Press HUSH button enter Do Not Disturb Mode for 10 hours
Internal fault	Flash twice every 40 seconds	One Chirp every 40 seconds, HUSH button enter Do Not Disturb Mode for 10 hours
Buzzer fault warning	Flash twice every 40 seconds	-
Hush mode	One flash every 8 seconds	-
Do not disturb	One flash every 40 seconds	-
Smoke detected on local alarm*	One flash every second	Continuous alarm signal pattern Press HUSH button to enter Hush Mode for 10 minutes
Smoke detected on interconnected or paired unit	-	Continuous alarm signal pattern Press HUSH button to enter Silent Mode for 10 minutes
Test function	One flash every second	Continuous alarm signal pattern
Alarm memory mode	Flashes twice every 20s approximately	-
End of Life [10 year] Warning	Flashes twice every 40 seconds	Chips every 40 seconds Can't enter Silent Mode

\*Continuous alarm pattern: Beep 0.5s- Pause 0.5s- Beep 0.5s- Pause 0.5s-Beep 0.5s- Pause 1.5s repeatedly per ISO 8201

## Clear a wireless paired smoke alarm

- 1 Turn smoke alarm off by disconnecting both mains power and battery, press and hold the TEST button while putting on the battery. Follow the sequence below.
- 2 Red light ON- Red light OFF- release TEST button- Red light ON- press TEST button- Beep once & Red light OFF- Beep 3 times. Unpair successful.

## Warranty Information

Voltex warrants this accessory against defective workmanship and faulty materials for seven (7) years from the original date of purchase.

**Product may only be used in Voltex smoke alarm model SAS135MH. Using in any other alarm will void warranty**

**VOLTEX**<sup>®</sup>

© Voltex Electrical 2020. All Rights Reserved.

Australia  
www.voltexelectrical.com.au

P: 1300 722 275 E: sales@voltexelectrical.com.au

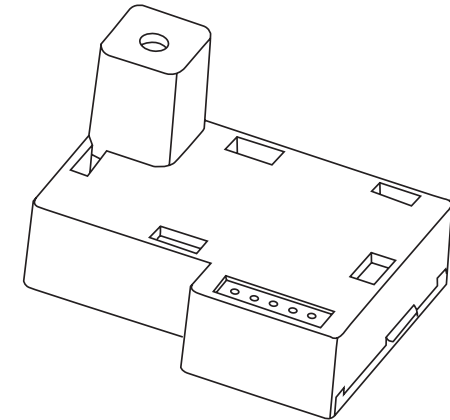
New Zealand  
www.voltexelectrical.co.nz

P: 0800 55 66 33 E: sales@voltexelectrical.co.nz

**VOLTEX**<sup>®</sup>

ELECTRICAL ACCESSORIES

## SASWM SMOKE ALARM WIRELESS MODULE USER MANUAL



Please read these instructions carefully before installation and operation.

Specifications	
Application	Suitable for Voltex 240V smoke alarm SAS135MH
Wireless Distance	Up to 60m
Frequency	433.42MHz
Interconnection	Maximum 40 smoke alarms
Size	45 x 35 x 26mm
Temp range	0°C - 45°C
Max Humidity	5-95%RH
Alarm Signal Pattern	ISO 8201
Compliance	AS 3786:2014
Certification	CSIRO



ALL ELECTRICAL WORK MUST BE CARRIED OUT BY A LICENSED ELECTRICAL CONTRACTOR OR ELECTRICIAN.

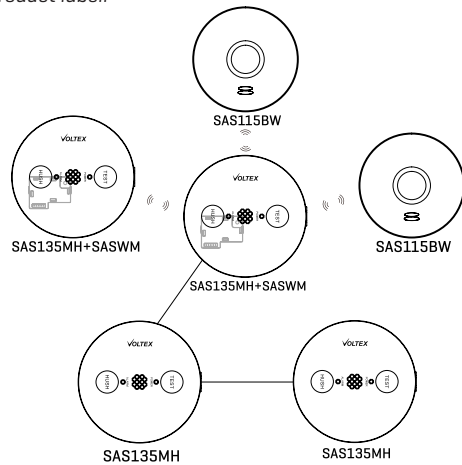
## System Interconnection

Interconnection can be achieved either by wiring the SAS135MH smoke alarms I-Connect terminals or pairing using Voltex smoke alarm wireless module SASWM.

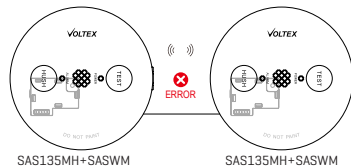
The Voltex smoke alarm wireless module SASWM can be paired with Voltex SAS115BW 10 year battery smoke alarm. This product is not wireless compatible with other brand smoke alarms and fire panels.

An example of possible smoke alarm interconnections is shown in the diagram below.

NOTE\* Only SAS115BW labeled with symbol **01** can be paired. The symbol **01** can be found on SAS115BW box, label of protective hat and product label.

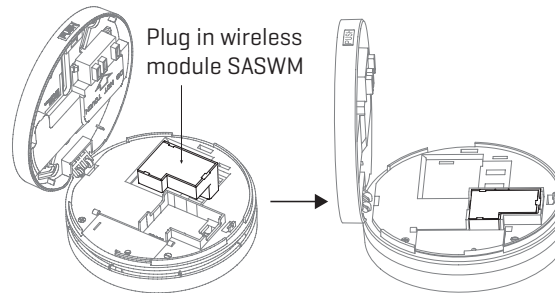


The smoke alarm should not be paired using both wireless and hard-wired interconnections. The interconnection will not function if both are used at the same time.



## Wireless Module Installation

1. Isolate mains power supply to the Voltex SAS135MH smoke alarm
2. Open the SAS135MH smoke alarm by pressing the button marked "PUSH"
3. If the battery isolating strip in smoke alarm was removed, disconnect the battery and press the TEST or HUSH button a few times to deplete residual energy.
4. Remove the dummy module and replace with wireless module SASWM



5. Connect battery- observe correct polarity.
6. The red LED flash indicating the unit is searching for a wireless connection. This can take up to 8 seconds.
7. If a network is detected but not paired, the alarm will chirp 3 times and the red LED will flash twice every 8 seconds.
8. If a module is detected and paired correctly the red LED will extinguish after 8 seconds and the unit will chirp briefly.

## Wireless Pairing

1. Test each smoke alarm individually by pressing and holding the TEST button on the front centre of the smoke alarm for 2 seconds. The smoke alarm will sound.

2. Press the TEST button on any smoke alarm 3 times within 2 seconds to enter "Pairing Mode". The unit will remain in pairing mode for 5 minutes. This unit now becomes the MASTER smoke alarm. Only create one [1] MASTER per installation.

NOTE: Clearly mark the Master unit to add more smoke alarm into the interconnection group in the future

3. On any other SLAVE smoke alarm, press the TEST button 3 times within 2 seconds to enter pairing mode. If the network connection is successful, the MASTER unit will chirp, and the SLAVE unit LED will extinguish and chirp.

NOTE: To exit pairing, press TEST button on MASTER unit 3 times within 2 seconds, red LED will turn off.

Suggest to pair the smoke alarm with battery power only before install on roof and connect to mains power.

## Pairing with SAS115BW Battery Smoke Alarm

4. Repeat steps 1,2 and 3 above
5. To enter pairing mode, press the TEST button on the SAS115BW 3 times within 2 seconds
6. If SAS115BW pairing LED turns green and beeps once, this indicates pairing is successful.
7. Exit pairing mode by pressing and holding the test button on the MASTER unit for more than 3 seconds.

## Test Procedure for Wireless Interconnection

1. Power up each smoke alarm. Wireless interconnection can be tested by ONLY using battery power.
2. Pressing the TEST button on any smoke alarm for at least 5 seconds and RELEASE.
3. All interconnected alarms will sound for approximately 20 seconds and red LED flash for 3 minutes.
4. Repeat this procedure for each alarm to ensure all alarms are correctly paired.



Hush function is disabled during pairing TEST.