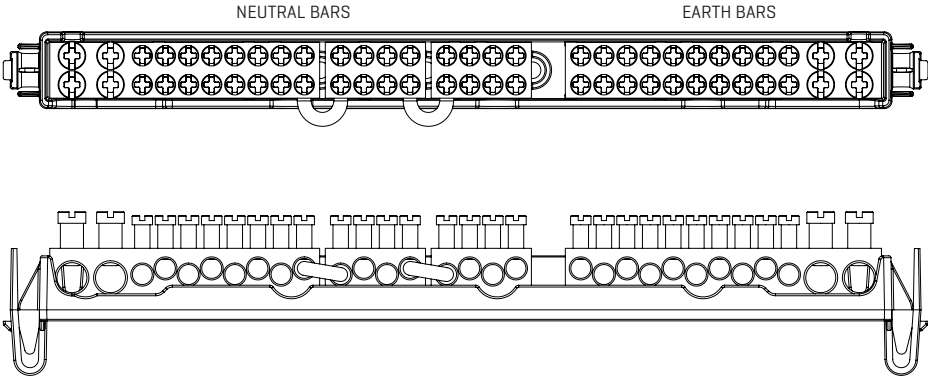


TECHNICAL SPECIFICATION

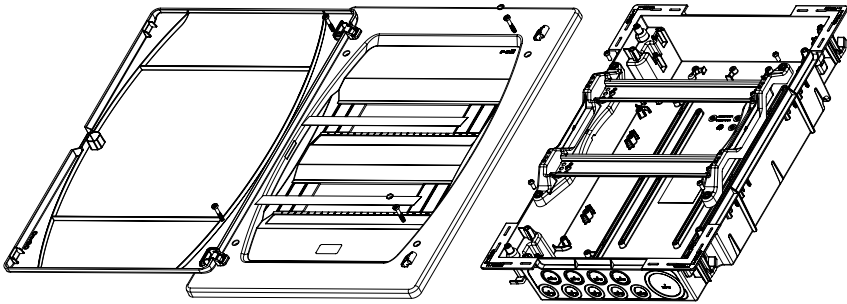


| PRODUCT | SUPPLIED NEUTRAL BARS                                                                                    | SUPPLIED EARTH BARS                                               |
|---------|----------------------------------------------------------------------------------------------------------|-------------------------------------------------------------------|
| PSF12W  | $[2 \times (35\text{mm}^2) + 8 \times (16\text{mm}^2)] + 2 \times [4 \times (16\text{mm}^2)]$            | $2 \times (35\text{mm}^2) + 10 \times (16\text{mm}^2)$            |
| PSF18W  | $[2 \times (35\text{mm}^2) + 8 \times (16\text{mm}^2)] + 3 \times [4 \times (16\text{mm}^2)]$            | $2 \times (35\text{mm}^2) + 16 \times (16\text{mm}^2)$            |
| PSF24W  | $2 \times [[2 \times (35\text{mm}^2) + 8 \times (16\text{mm}^2)] + 2 \times [4 \times (16\text{mm}^2)]]$ | $2 \times [2 \times (35\text{mm}^2) + 10 \times (16\text{mm}^2)]$ |
| PSF36W  | $2 \times [[2 \times (35\text{mm}^2) + 8 \times (16\text{mm}^2)] + 3 \times [4 \times (16\text{mm}^2)]]$ | $2 \times [2 \times (35\text{mm}^2) + 16 \times (16\text{mm}^2)]$ |

Rated Current of Earth and Neutral Bars = 125A

VOLTEX®  
INSTRUCTION GUIDE

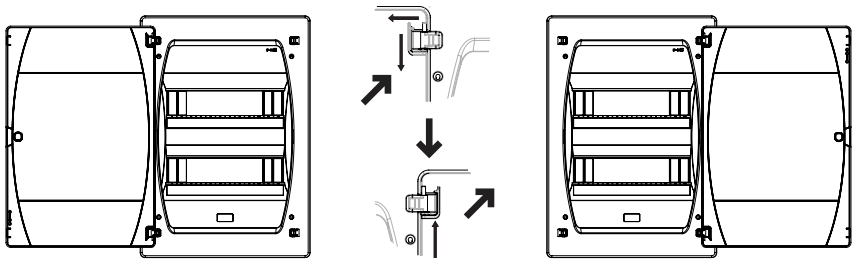
Flush Mount Switchboard IP40  
PSF12W, PSF18W, PSF24W, PSF36W



ITEMS INCLUDED

| PRODUCT | Front Cover and Door Assembly | Base Assembly | Module Identification Label | Spare brackets | Pole Filler Set | Sticker Label Set |
|---------|-------------------------------|---------------|-----------------------------|----------------|-----------------|-------------------|
| PSF12W  | 1                             | 1             | 1                           | 1              | 1               | 1                 |
| PSF18W  | 1                             | 1             | 1                           | 1              | 1               | 1                 |
| PSF24W  | 1                             | 1             | 2                           | 1              | 2               | 1                 |
| PSF36W  | 1                             | 1             | 3                           | 1              | 2               | 1                 |

CHANGING DOOR ORIENTATION

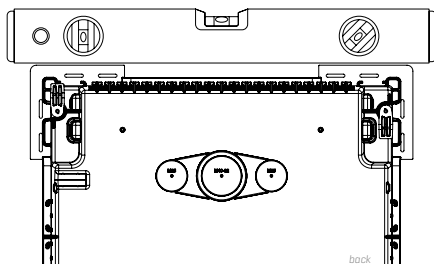


## MOUNTING PROCEDURE

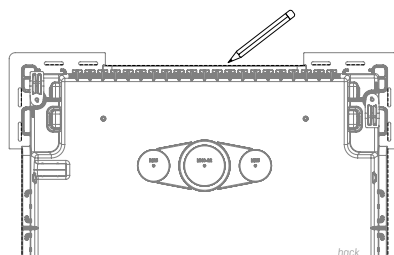


CHECK FOR STUDS BEFORE PROCEEDING WITH THE INSTALLATION.  
CHECK IF YOU NEED A PROTECTION PLATE. (PROTECTION PLATE IS SOLD SEPARATELY)

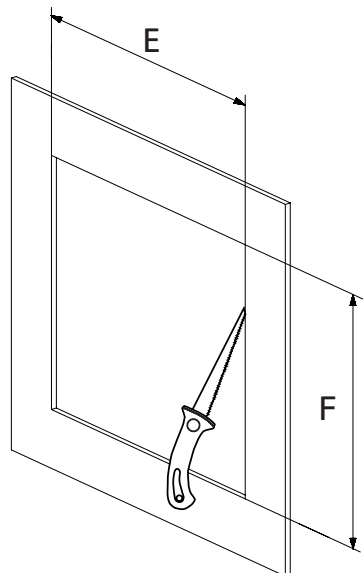
- 1 Make sure board is level.



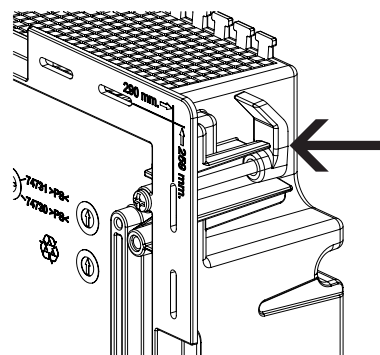
- 2 Trace around frame perimeter and through corner flange slots. Alternatively, refer to suggested cut out size table.



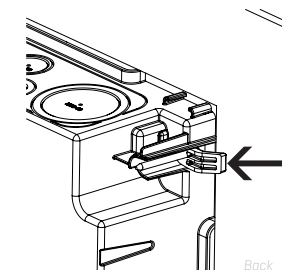
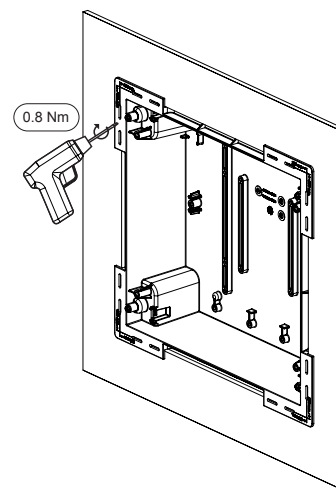
- 3 Cut hole in plasterboard.



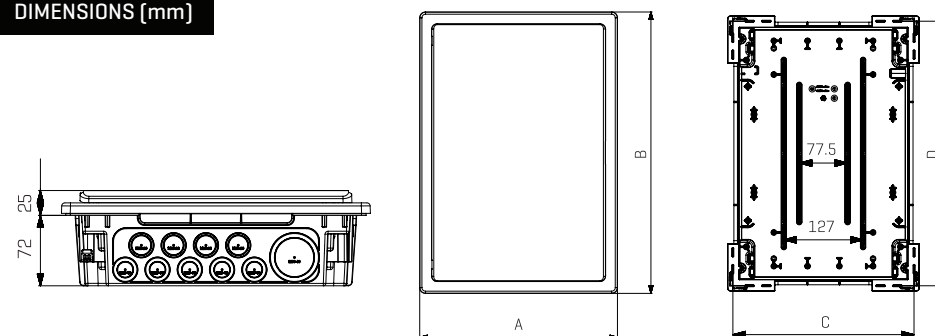
- 4 Rotate clips within confines of board



- 5 Place board into hole, clamping brackets to plasterboard by fastening 4x corner screws



## DIMENSIONS [mm]



| Model  | A [mm] | B [mm] | C [mm] | D [mm] | E [mm] | F [mm] |
|--------|--------|--------|--------|--------|--------|--------|
| PSF12W | 316    | 284    | 290    | 259    | 292    | 260    |
| PSF18W | 424    | 284    | 398    | 259    | 400    | 260    |
| PSF24W | 316    | 449    | 290    | 424    | 292    | 425    |
| PSF36W | 316    | 574    | 290    | 549    | 292    | 550    |