



VOLTEX[®]
Shadowline

Shadowline™ by VOLTEX®

A completely new range of Slim Switches, Power Outlets and Accessories has been born. Welcome to Shadowline™ by VOLTEX®!

VOLTEX® has worked hard to develop this premium range to be the ultimate Slim Style and have achieved this superbly, with the plates projecting a mere 4.7mm off the wall.

In addition to this, they have superior rigidity and a host of other design features to make installation a breeze, while being one of the most aesthetically-appealing ranges available on the market today.

Shadowline™ has been designed to be the perfect complement to any home or commercial project. And with the VOLTEX® 25-year Lifetime Warranty, you can specify and install with complete confidence.



*We hope
Shadowline and
this presentation
tool will assist you
in that pursuit.*

The All New Shadowline™ Range - Slim is IN!



VOLTEX®
Shadowline

Shadowline Outlets

**Voltex Shadowline Double
Power Outlet 250V 10A**

SLPP2H



**Voltex Shadowline Single
Power Outlet 250V 10A**

SLPP1H



**Voltex Shadowline Double Power
Outlet with Extra Switch 250V 10A**

SLPP2HX



**Voltex Shadowline Single Power
Outlet with Extra Switch 250V 10A**

SLPP1HX



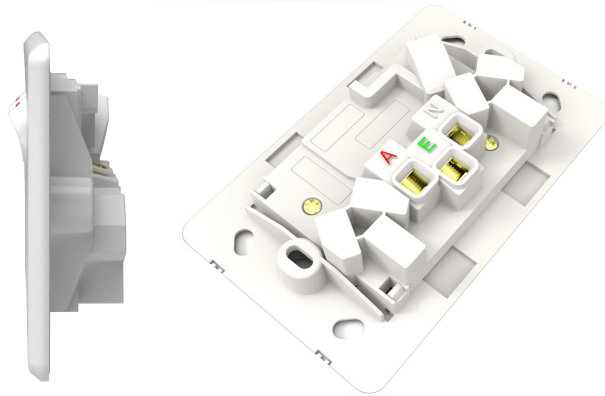
- Beautiful gloss finish
- Excellent firm feel
- Full range of configurations in Switches & Powerpoints
- Easy-Install Straight top
- Large terminals & captive screws



VOLTEX®
Shadowline

Shadowline Outlets

Slim and Sleek Design



VOLTEX®
Shadowline



- Beautiful gloss finish
- Excellent firm feel
- Full range of configurations in Switches & Powerpoints
- Easy-Install Straight top
- Large terminals & captive screws

Shadowline Switches

**Voltex Shadowline 1 Gang
Switch 250V 16AX**
SLSW1



**Voltex Shadowline 2 Gang
Switch 250V 16AX**
SLSW2



**Voltex Shadowline 3 Gang
Switch 250V 16AX**
SLSW3



**Voltex Shadowline 4 Gang
Switch 250V 16AX**
SLSW4



**Voltex Shadowline 5 Gang
Switch 250V 16AX**
SLSW5



**Voltex Shadowline 6 Gang
Switch 250V 16AX**
SLSW6



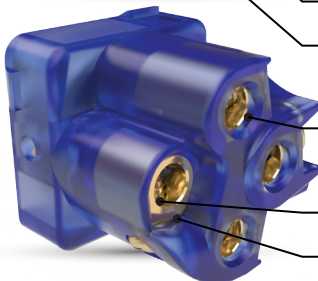
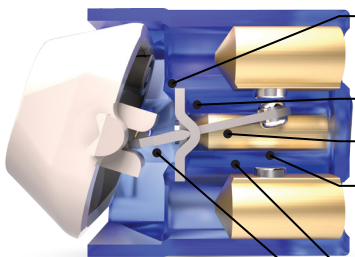
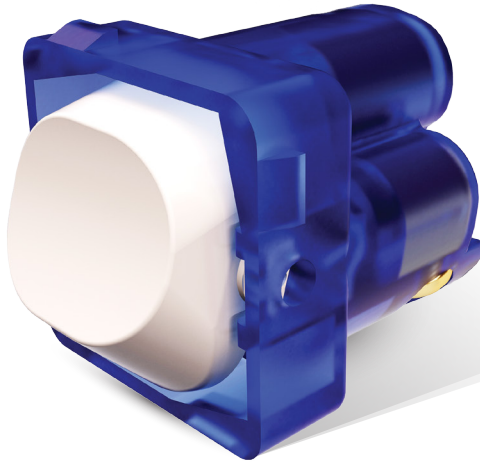
- *Straight edges for easy alignment*
- *Cutout template provided*
- *Large terminals with captive screws*
- *Slim 4.7mm thickness*
- *Exceeds all relevant Australian & New Zealand Standards*
- *Multiple oval shaped mounting holes in the plate for flexibility when mounting.*
- *Standard Gloss Finish.*



VOLTEX®
Shadowline

Announcing the **NEW High Performance SWITCH MECH**

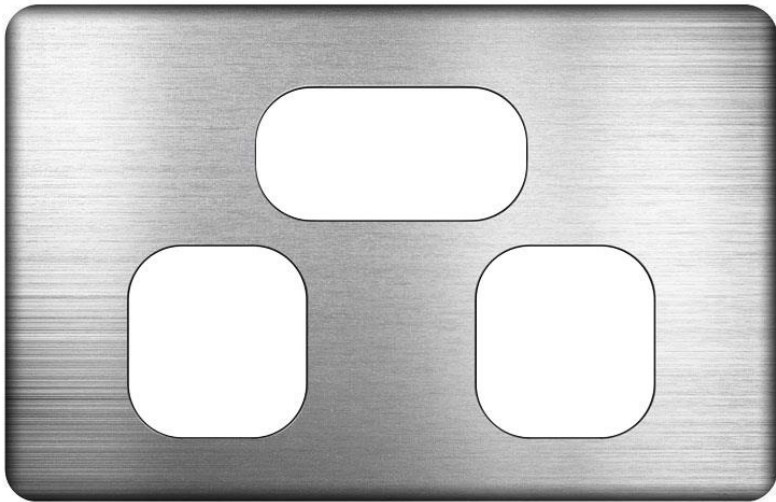
The ALL NEW Voltex 16AX switch mechanism
is now coming through as our standard mechanism.



- Genuine Silver Plated contacts reducing resistance, and in turn heat load, to increase current rating.
- Upgraded ratings, increased cycle Life.
- Motor rating md quality compatible.
- Fast arc quenching action. and no possibility of remaining in the mid-point.
- 3mm air gap to decrease arcing, improving contact isolation.
- Long stroke length of lever prevents excessive carbon deposits on dolly and aperture.
- Angled terminals, and lowered loop terminal to improve ease of wiring in multi gang plates.
- Larger gauge terminal screws to increase grip on cable.
- Improved terminal screw head penetration depth.

Shadowline Cover Plates

Voltex Shadowline Stainless Steel
Cover Plate for Double Power Outlet



Suits horizontal [SLPP2H] double power outlets.

- Plate size: 115mm [W] x 74mm [H]
- Material: 304 Stainless steel



VOLTEX[®]
Shadowline



www.voltexelectrical.co.nz

0 8 0 0 5 5 6 6 3 3