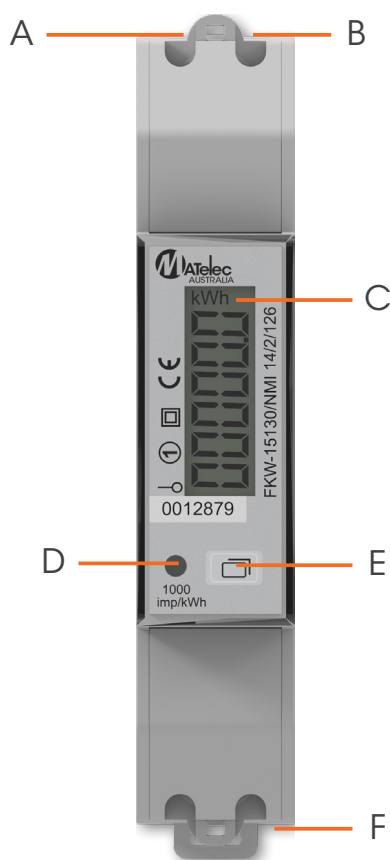




kWh Meter

Product Code: FKW-15130/NMI

Thank you for purchasing the FKW-15130/NMI Single Phase, Kilowatt Hour Meter.



Description

- A. Neutral Wire
- B. L - In
- C. Lcd Screen
- D. Impulse Indication
- E. Turn Page Button
- F. L - Out

Features & Benefits

- Solar compatible
- Operational current 0.25 - 100A
- DIN RAIL standard installation size
- Only 18mm wide
- Displays Current and Voltage
- Reactive energy can be measured
- PBT+15%GF fire resistant
- Degree of Protection: IP51 (Indoor meter).
- NMI 14/2/126

Specifications

Materials:

- Housing - Fire resistant ABS

Weatherproof Rating:

- IP51

Display:

- Digital LCD

Accuracy Class:

- Class 1

Insulation Class:

- Class 2

Maximum Rated Current:

- 100Amp

Operational Current Range:

- 0.25 - 100Amp

Over Current Withstand:

- 1000Amp for 0.1s

Nominal Voltage:

- 230Vac

Operating Frequency:

- 50 - 60Hz

Maximum Cable Capacity:

- 25mm² (neutral 2.5mm²)

Operating Temperature:

- -25°C to 70°C

Test Output Flash Rate:

- 1000 impulses per kWh

Power Supply Indicator:

- Mains power ON

Consumption Indicator:

- Flashing on load

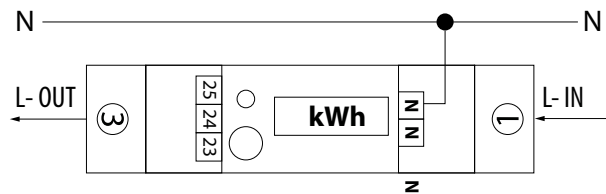
Dimensions:

- 90mm (H) x 18mm (W) x 72mm (D) 1 Module

Qualified personnel

Installation and operation of this equipment described in this manual may only be performed by a suitably qualified person. Only people that are authorised to install and connect electrical equipment in your state and can do so according to safety and regulatory standards are considered qualified personnel in this manual.

Connection Diagram



Note: The Neutral wire can be connected to one of the N ports or both. Terminals 23, 24 and 25 are not active.

Parameters on LCD Screen

LCD SCROLLING DISPLAY PAGES

Access by short pressing of page button to scroll through each page

Page	Content	Unit	Format	Remark
1	Total active energy	kWh	00000.00	Accumulated total forward/reverse active energy
2	Forward active energy	kWh	00000.00	Accumulated total forward active energy
3	Reverse active energy	kWh	00000.00	Accumulated total reverse active energy
4	Total reactive energy	KVArh	00000.00	Accumulated total reactive active energy
5	Resettable total active energy	kWh	00000.00	Resettable total forward/reverse active energy
6	Resettable reactive energy	KVArh	00000.00	Resettable total forward/reverse reactive energy
7	Voltage	V	000.00	Line voltage passing through energy meter
8	Current	A	000.00	Amps consumed by load
9	Active power	W	00000	Power consumed by the connected load
10	Reactive power	Var	00000	Inductive charging power available
11	Apparent power	VA	00000	Total power drawn from supply source
12	Power factor	PF	0.00	Ration between active and apparent power
13	Frequency	Hz	00.00	Rate of alternating current
14	Forward active demand	W	d 00000	Instantaneous forward active power draw from source
15	Forward maximum active demand	W	P 00000	Maximum instantaneous forward active power draw from source
16	Reverse active demand	W	d 00000	Instantaneous reverse active power draw from source
17	Reverse maximum active demand	W	P 00000	Maximum instantaneous reverse active power draw from source
18	Forward reactive power demand	VAr	d 00000	Instantaneous forward reactive power demand from source
19	Forward maximum reactive demand	VAr	P 00000	Maximum instantaneous forward reactive power demand from source
20	Reverse reactive demand	VAr	d 00000	Instantaneous reverse reactive power demand from source
21	Reverse maximum reactive demand	VAr	P 00000	Maximum instantaneous reverse reactive power demand from source

LCD INFORMATION DISPLAY PAGE

Access by long press of page button until "SETUP" is displayed. A short press will take you to the below

Page	Content	Unit	Format	Format
1	12 Digit serial number of the meter		000000000000	
2	LCD page scroll time	LCd	00	0-99 seconds for window change scroll time
3	Demand calculation method & cycle	dOt	00	Default 15mins
4	Combination code		0	1= Total forward 2= Total reverse 3= Total forward + reverse (default) 4= Total forward - reverse
5	SO Constant	So	0000	Default 1000
6	Software version number	U	U000	U101 or above
7	CRC code			SA8E typical

LCD SETTING PAGE

Access by long press (min 3sec) of page button until "SETUP" is displayed. A further long press (min 3sec) will take you to the below

Page	Content	Unit	Format	Remark
1	Setup password		0000	Default 0000 Long press to adjust/confirm each number
2	Reset clearable active energy	kWh	00000.00	Long press to clear
3	Reset clearable reactive energy	kVARh	00000.00	Long press to clear
4	Reset clearable maximum active energy	W	P 00000	Long press to clear
5	Reset clearable maximum reactive energy	Var	P 00000	Long press to clear
6	LCD page scroll time	LCd	00	Long press to adjust/confirm each number. 00 for static page screen
7	Demand calculation method & cycle	dOt	00	Long press to adjust/confirm each number
8	Combination code	CodE	0	Long press to adjust/confirm number 1= Total forward 2= Total reverse 3= Total forward + reverse (default) 4= Total forward - reverse
9	SO Constant	So	0000	Long press to adjust/confirm each number
10	Password setting		0000	Long press to adjust/confirm each number
11	Quit Setup		QUIT	Long press of page button (min 3secs) to return to scrolling pages

Safety information

This manual does not contain all the safety measures for installation due to regional requirements for electrical installations, however, it does contain information which must be adhered to for your own personal safety and to avoid damage to the equipment. This information is highlighted by a warning triangle with an exclamation mark or a lightning bolt depending on the severity of the warning and can be found on the product and in this manual.



Warning

Indicates a failure to observe the instruction will result in imminent death, serious injury or considerable material damage.



Caution

Indicates that a failure to observe the instruction can result in death, serious injury or considerable material damage.