



AU/ NZ SMOKE ALARM INSTALLATION REQUIREMENTS

IMPORTANT: This is a simplified document and provided as an indicative guide only and it is not to be relied upon in any way as a substitute for further research, investigation and legal advice. Always check against the latest NCC Building Code of Australia and any other local regulatory provisions.

WARNING: Smoke alarms cannot detect smoke through a closed door. It is recommended you install a smoke alarm in each sleeping area, hallway and living area and even the garage. Smoke alarms installed in hallways should be located between the bedrooms and the rest of the house. A more suitable alarm, such as a heat alarm, may be permitted in locations which can give spurious alarms if the atmosphere contains particles which obscure vision such as could occur in a private garage.

IMPORTANT: In a house with more than one level, install a smoke alarm on the ceiling at the head of the stairway connecting the levels. On those levels where sleeping areas are located, additional smoke alarms may be required between the sleeping areas and the path of exit.

IMPORTANT: Legislation provides for a minimum level of protection; however, owners and occupants may consider higher levels of protection than required.

Every State Fire Authority in Australia recommends that you install a Photoelectric type Smoke Alarm complying with AS 3786:2014

- Photoelectric smoke alarms are more sensitive at detecting slow smouldering fires, which may burn for hours before bursting into flame. This means a fire can be detected sooner and why they are recommended.
- Ionisation smoke alarms are typically less effective at detecting the early, smouldering stage of a fire. They are generally more suited to detecting fast flaming fires, which burn and spread quickly.

Only WORKING smoke alarms save lives: Smoke detectors are important to ensure the safety of the household. Proper installation and maintenance of these devices could prove to be lifesaving.

These tips will help to make sure the smoke alarm will perform as intended – when needed the most. Ensure after installation the household is made familiar with them:

- Smoke alarms should be tested every month by pressing and holding the test button (use the end of a broom handle if out of normal reach).
- A regular chirp indicates the battery power is low and the battery or smoke alarm needs replacing. Follow the Manufacturer's Instructions manual for specific guidance on changing the battery if the model incorporates a replaceable battery or action to be taken if smoke alarm incorporates a non-replaceable battery.
- Smoke alarms should be cleaned with a vacuum cleaner every 6 months to remove dust or particles around vents.
- Smoke alarms do not last forever and the sensitivity in all smoke alarms will reduce over time. All types of smoke alarms should be removed, replaced and disposed of at least every 10 years. A year of manufacture date is displayed on all smoke alarms. It is also recommended the date of installation be written on the base of the smoke alarm with a permanent marker for later reference.

AU/ NZ SMOKE ALARM INSTALLATION REQUIREMENTS

Smoke alarm installation in a household unit

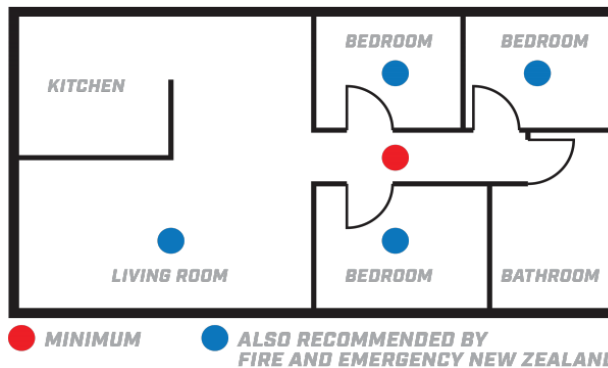
Note: For guidance only. Always check with the New Zealand Building Code and local regulations.

Type

- Photoelectric type, Ionisation type or Combination of the two [AS 3786:1993; ISO 12239:2003 or BS EN 14604:2005]
- 240V mains powered with battery back-up or Non-removable 10-year battery powered type

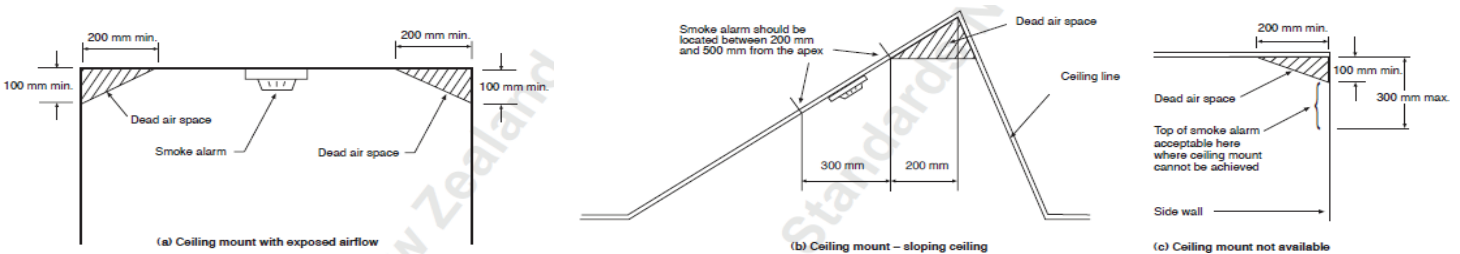
Alarm locations

- In multi-storey units, there shall be at least one smoke alarm on each level within the household unit.
- On levels containing the sleeping spaces, the smoke alarms shall be located either:
 - i) In every room where a person sleeps, or
 - ii) Within 3.0 m of every sleeping space [bedroom] door. In this case, the smoke alarms must be audible to sleeping occupants on the other side of the closed doors.
- In all cases, so that the sound pressure level complies with that specified in NZS 4514.



Mounting

- Smoke alarms shall be installed on or near the ceiling. The placement shall be in accordance with NZS 4514.



Interconnection

- Recommended [the interconnection of individual smoke alarms should be considered if audibility is a problem].

Further information

<https://fireandemergency.nz/home-and-community-fire-safety/smoke-alarms/>