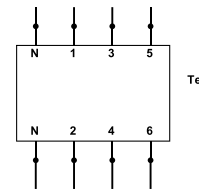




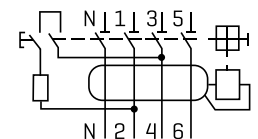
Technical Specifications:

Rating:	40A, 63A
Rated Voltage:	230/240 VAC
Rated Frequency:	50/60 Hz
Number of Poles:	2P, 4P
Module Size:	2M, 4M
RCD Type:	AC [AU], A [NZ]
Breaking Capacity:	6000A
Rated Residual Operating Current:	30mA
Optimum Operating Temperature:	-5°C to 40°C
Terminal Tightening Torque:	1.2 Nm
Terminal Capacity [top]:	25mm ²
Terminal Capacity [bottom]:	25mm ²
Suitable Busbar:	BUS-2P-9M

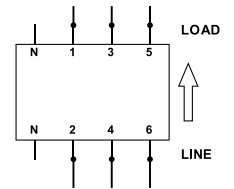
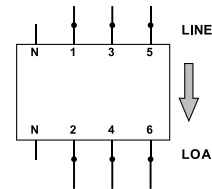
3 Phase Connection with Neutral



RCD Test button



3 Phase Connection without Neutral
380-415V



Compliance:

AS/NZS 61008.1

