

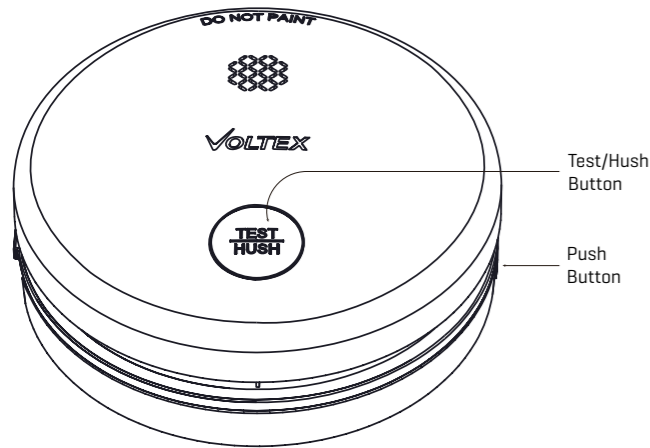
Thank you for purchasing a Voltex Smoke Alarm.
Please read these instructions carefully
before installation and operation.



SASM9VALK SMOKE ALARM INSTALLATION MANUAL

Sensing Type	Photoelectric (Type A - contains no radioactive material)
Power Supply	220-240V AC 50Hz Replaceable Alkaline battery
Battery life	1 year backup Alkaline (with Mains power permanently connected)
Interconnectivity	Hard Wired
Interconnection (Wired I/Connect)	Maximum 24 paired alarms Max wiring length between first and last alarm: 150 m
Interconnection Compatibility	Can be interconnected to Voltex SASMH9V and SASMH9VRF smoke alarms (via hardwired interconnection) Not compatible with Voltex SAS135MH alarm
Size	Φ135mm x 45mm
Temp range	0°C - 45°C
Max Humidity	95%RH
"Alarm Signal Pattern"	ISO 8201
Alarm Volume	85dB at 3m
Hush Time	10 mins
Compliance	AS 3786: 2014+A1:2015+A2:2018

Buttons and Indicators



WARNING: CANNOT BE CONNECTED TO VOLTEx SAS135MH (3V) MODEL SMOKE ALARM VIA I/CONNECT WIRE

Important Safety Information

- This Voltex Smoke Alarm is designed for use in dwellings and shall be installed by a licensed electrician. It is intended to detect smoke before it reaches the occupants of a building. The ensuing alarm is designed to wake the occupants and give them time to evacuate the building.
- This smoke alarm SHALL be installed in accordance with national and local council building regulations and the latest edition of the Australian and New Zealand wiring Rules AS/NZS 3000. A simplified, by State, installation requirements guide is available on Voltex's website.
- The alarm cannot be operated from a non-sinusoidal power source, e.g. a square wave or modified sine wave inverter.
- For smoke alarm using scattered or transmitted light, the response threshold value band 1 or <0.2m dB/m.
- ALL ELECTRICAL WORK MUST BE CARRIED BY A LICENCED ELECTRICAL CONTRACTOR OR ELECTRICIAN.

Recommended Installation Locations

- At least one smoke alarm shall be fitted on each storey (including basements) - in each bedroom and in corridors or hallways which connect bedrooms and the rest of the dwelling or as required by relevant local legislation.

Scan this QR to download the PDF or follow this link
<https://voltex.co/sas-install-req>



- Where practicable smoke alarms should be placed on the ceiling.
- It is important to install the smoke alarm in the centre of the room, avoiding dead air spaces (an area in which trapped hot air will prevent smoke from reaching the alarm). Smoke alarms must not be placed within:
 - 300mm of a corner of a ceiling and a wall
 - 300mm of a light fitting
 - 400mm of an air-conditioning vent
 - 400mm of the blades of a ceiling fan
- Smoke alarms must be paired (interconnected) with every other smoke alarm so they all activate together.

SINGLE FLOOR

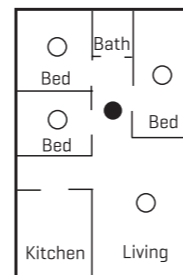


Figure B

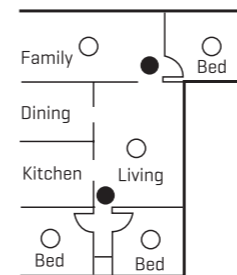
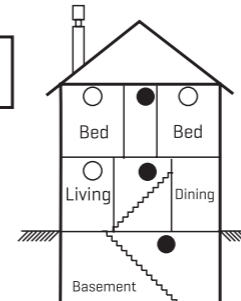


Figure C

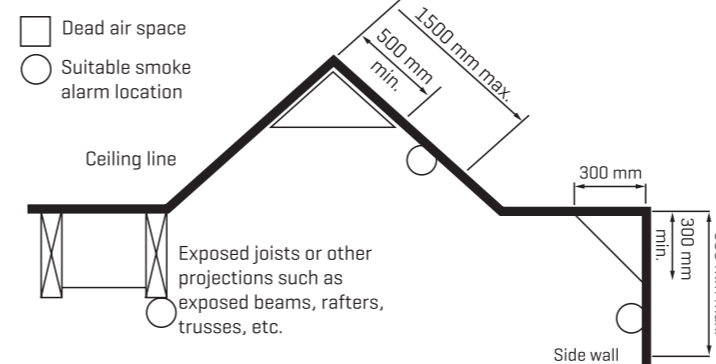


● Minimum Protection

○ Additional Protection

Where it is not possible to place the alarm on the ceiling, the smoke alarm may be installed on the wall at a minimum of 300mm and a maximum of 500mm off the ceiling at the junction of the wall.

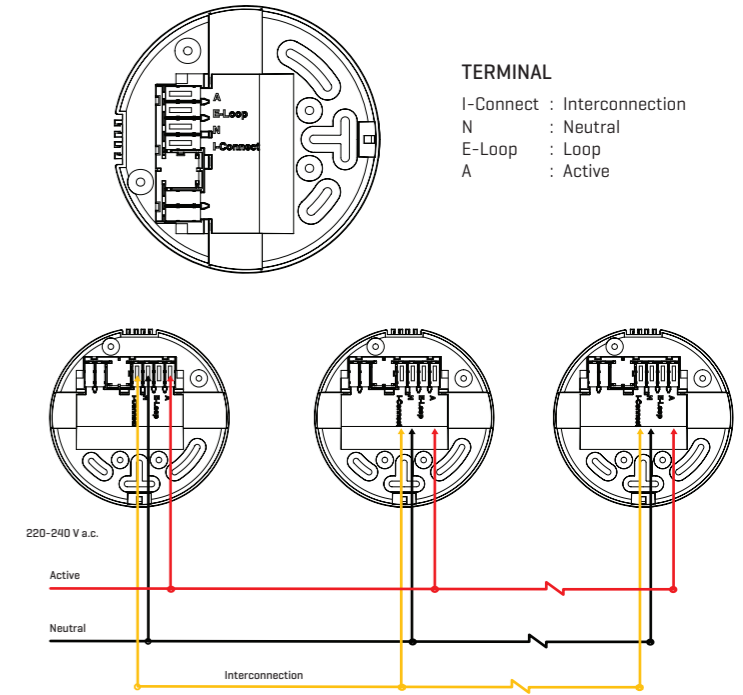
There are special requirements for stairways, sloping ceilings and ceilings with exposed beams. Specific requirements are explained in the relevant Building Regulation.



Nuisance Alarms

To reduce the likelihood of nuisance alarms, it is preferable that smoke alarms are not located near cooking appliances, bathrooms or laundries

Wiring Diagram



Note: Terminal cover is supplied separately in accessory bag, make sure the terminal cover is installed after wiring.

Installation Procedure

- Remove the battery isolation strip to connect the battery.
- Select an appropriate location and facilitate necessary wiring.
- Isolate the power supply and wire the appropriate power terminals on the back of the smoke alarm.
- Wire the interconnecting cable.
- Mount the smoke alarm in the ceiling with the supplied fixings and clip the smoke alarm shut.
- Apply power to the smoke alarm unit. A green LED indicates power is available.
- Test the smoke alarm by pressing and holding the test button for at least 5 seconds. If installed correctly and unit is functioning properly, an alarm should sound. If multiple alarms are installed, test the interconnection on all alarms.

System Interconnection

If more than one smoke alarm is installed all units shall be interconnected. Follow State/Territory regulations. Interconnection can be achieved by wiring the I-Connect terminals of the alarm together with another SASMH9V series smoke alarm.



WARNING: DO NOT CONNECT INTERCONNECTION WIRE TO ACTIVE, NEUTRAL OR EARTH

NOTE: VOLTEX SMOKE ALARMS SHOULD NOT BE INTERCONNECTED WITH ANY OTHER BRANDS OF SMOKE ALARMS

NOTE:

- 1. Interconnection wire shall be no less than 1.5mm² and shall be SDI cable**
- 2. Smoke alarms which are interconnected using hard wiring must be on the same circuit.**

Do not connect high-power electrical appliances in the same circuit of the alarm.

HUSH Mode

In the event of an alarm condition, pressing the HUSH button on the alarm unit will silence the alarm for approximately 10 minutes.

NOTE: Where multiple alarms are interconnected, the HUSH function WILL NOT OPERATE EXCEPT ON THE UNIT THAT THE ALARM WAS TRIGGERED FROM. The triggered unit can be identified by the RED LED flashing.

Do Not Disturb Mode

When the unit indicates a low battery alarm or internal fault, pushing the HUSH button will silence the alarm for 10 hours and the red LED will flash every 40 seconds.

Test Procedures For Hardwired Interconnection

1. Ensure the green LED is continuously illuminated on each unit, this indicates 240V mains AC power is available.
2. Pressing and holding the test button on any smoke alarm for at least 5 seconds will activate an alarm and cause the red LED on the front face to flash. [Note: all other interconnected smoke alarms will stop alarming when releasing the Test button, but the red LED will flash for 3 minutes.

3. Repeat this procedure for each alarm.
Note: The sending/test unit will only sound on initial pressing, not together at same time as the receiving units.

AVOID THESE LOCATIONS:

- In the garage: dust, insects & car fumes can cause nuisance triggering.
- In areas where the temperature may fall outside 0°C - 45°C.
- In dusty areas. Dust particles may cause nuisance alarm or failure to alarm.
- In very humid areas [greater than 95% R.H.]. Moisture or steam can cause nuisance alarms.
- In insect-infested areas.
- Smoke alarms should not be installed within 3 ft (0.9m) of the following: the door to a kitchen, the door to a bathroom containing a tub or shower, forced air supply ducts used for heating or cooling, ceiling fans or other high air flow areas.
- Near fluorescent lights. Electronic "noise" may cause nuisance alarms.

Product Function Description		
Function	Indication	Description
Standby status	The Red LED flashes every 48 seconds.	Normal operation.
AC power indication	The Green LED illuminates continuously.	The unit is receiving AC power.
Low battery warning	The unit chirps with Red LED flashing every 48 seconds.	Low battery voltage replace a new battery within 30 days.
Fault warning	The unit beeps twice and flashes twice every 48 seconds	The unit is faulty refer to section section: "Trouble Shooting".
Self-test fault warning	The Red LED flashes twice every about 48 seconds.	Buzzer fault or buzzer detection circuit fault.
End-of-life warning	The unit chirps between the Red LED two times flashing.	The unit will send end-of-life warning after working 10 years. Need to replace a new smoke alarm.
Test function	The Red LED flashes once every second with alarm sounding until the TEST Button is released.	<ul style="list-style-type: none"> • Test by pressing the TEST button on the smoke alarm for at least 5 seconds. • The alarm will sound if all electronic circuitry, horn and battery are working properly. • If no alarm sounds, refer to "Trouble Shooting". • Recommend testing the alarm Weekly by pressing the TEST button.
Hush Mode	The Red LED flashes every 8 seconds.	<ul style="list-style-type: none"> • This smoke alarm has a built-in Silence feature. • If cooking or other non-hazardous sources cause the alarm to sound, it can be temporarily silenced by pressing the HUSH button for at least 2 seconds. • The alarm enters Hush mode for 10 minutes. • After the 10 minute dormant period, the smoke alarm will resume normal operation.
Fire alarm	The Red LED flashes every second with alarm sound.	Generate alarm sounds when fire happening
Alarm Memory	The Red LED Flashes twice every 24 seconds.	After the unit triggers, it enters the alarm memory state, and the red LED flashes twice every 24 seconds for one week.
Interconnection alarm	The unit generate alarm sounds without Red LED flashing.	The unit will enter the interconnection alarm mode when received wire interconnection alarm signals
Interconnectoin alarm memory	The Red LED flashes onces every 1 second.	After the unit exits Interconnection alarm state, it enters Interconnection alarm memory state, and the red LED flashes once every 1 second for 3 minutes.
Do not disturb function	The Red LED flashes every 48 seconds.	The unit will stop nuisance warning for 10 hours under low battery or fault mode when HUSH button is pressed.

**Continuous alarm pattern: Beep 0.5s- Pause 0.5s- Beep 0.5s- Pause 0.5s-Beep 0.5s- Pause 1.5s repeatedly per ISO 8201 Smoke is detected, and the building must be vacated immediately. Emergency services must be notified.*

NOTE: If self-test fault warning is existing, but the product can sound alarm when press the test button. The product can continue to be used. Need to test weekly by press the test button instead of self-test weekly.

Maintenance

- Periodically apply the Test Procedure to test the alarm.
- Smoke Alarm are prone to dust and insect ingress which can cause false alarm, it is prudent to clean the smoke alarm periodically. The Smoke Alarm must be kept clean so that excess dust does not build up. Any insects or cobwebs in the vicinity of the Smoke Alarm should be promptly removed. Vacuum the outside of the Smoke Alarm to remove any dust build up.
- Do not spray any cleaning liquids directly onto the smoke alarm.

Alarm Memory

The Red LED on the triggered alarm ashes TWICE every 24 seconds for one week. This can be used to idenfy the triggered unit. The memory will last for 7 days from the last trigger event. Removing the battery will pause the memory, not delete it.

Trouble Shooting

Problem	Solution
Green LED not lit	Check mains power connection If green power light still not visible, perform a re-start: Remove the battery, press Test button twice, re-install battery.
Interconnected smoke alarms don't alarm during test	Check if Smoke Alarms are in same circuit, interconnect cable is corrected firmly and mains power is connected.
Alarms sound for no apparent reason	Check for fumes, steam, etc. from the kitchen or bathroom. Paint and other fumes can cause nuisance alarms. Check for any sign of contamination such as cobwebs or dust. Clean the alarm.
	Press the local Hush button to silent the Smoke Alarm triggered, identify the alarm that triggered by the flashing red LED (alarm will not silence if it does not have a flashing red LED)
1x Chirp every 40 seconds and cannot hush	If cannot hush the smoke alarm, push the button located on the side and open the Smoke Alarm, take off the battery. Contact Voltex.
	Check if battery has been installed firmly, contact Voltex Install new 9V battery
Dust and insect Contamination	Vacuum the outside of the Smoke Alarm to remove any dust build up. Smoke Alarm are prone to dust and insect ingress which can cause false alarm, it is prudent to clean the smoke alarm periodically.

SMOKE ALARM FAULT FINDING

Faulty alarms will generally have a 20s double flash on the ALARM LED.

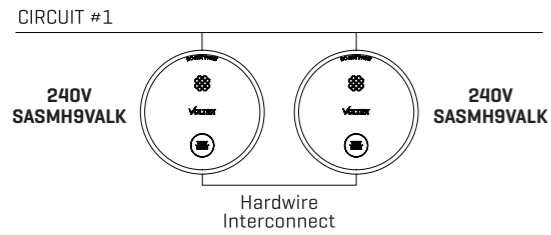
Scan this QR to watch the video or follow this link
<https://voltex.co/sasvid>



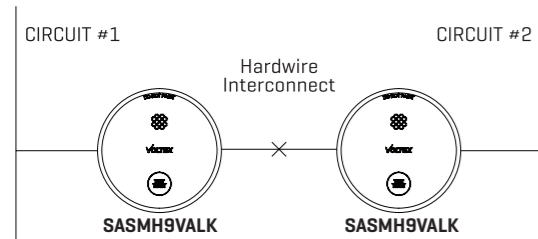
Call 1300 722 275 for assistance.

System Configuration

Hardwire Interconnect Only, 1 Circuit

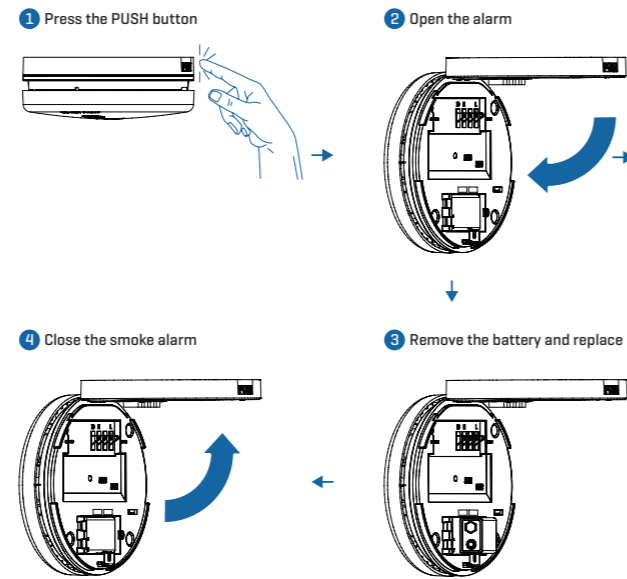


DO NOT HARD WIRE I/CONNECT ACROSS 2 CIRCUITS



Replacing the battery

- The smoke alarm incorporates a replaceable battery [9V Alkaline] which is designed to power the smoke alarm in the event of a short-term power outage. The battery is designed to last 1 year, subject to normal use and regular maintenance from the date of manufacture and can be replaced by opening the smoke alarm and accessing the battery under the battery cover



WARNING: CANNOT BE CONNECTED TO VOLTEX SAS135MH (240V with 3V Battery) MODEL SMOKE ALARM VIA I/CONNECT WIRE

Warranty Information

Voltex warrants this smoke alarm against defective workmanship and faulty materials for seven (7) years from the original date of purchase.

NOTE:
THE 9V ALKALINE BATTERY HAS A 1 YEAR WARRANTY ONLY.

VOLTEX[®]

📞 AU: 1300 722 275
NZ: 0800 55 66 33

✉️ sales@voltex.com

🌐 www.voltex.com

© Voltex Electrical 2024. All Rights Reserved.