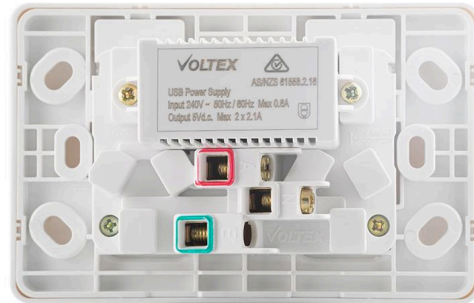




SLPP2HUSB



SLPP2HUSBB



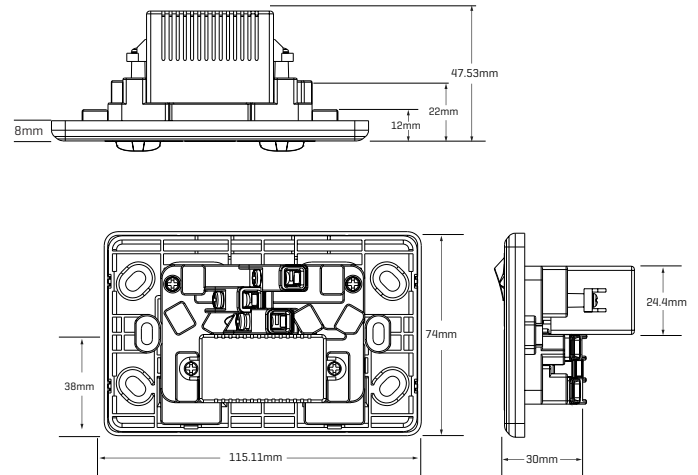
**Technical Specifications:**

Rated Voltage:	250V AC
Rated current:	10A
USB Output:	5V DC, 2x 2.1A [Max 4.2A]
Switching Poles :	1P
Connection type:	3 x Screw Terminals
Maximum Torque:	0.8Nm
Terminal Size:	16mm <sup>2</sup> [accommodates 4 x 2.5mm <sup>2</sup> cables]
Housing Material:	Polycarbonate
Contact Material:	Silver Alloy
Cut-Out:	[98mm X 55mm] <a href="#">Available Here</a>
Color:	Black White
Compatible Accessories:	V157

**Compliance:**

AS/ NZS 3112; AS/ NZS 3100  
AS/NZS 61558.2.16+ A1 + A2 + A3  
AS/NZS 61558.1.16 + A1 + A2

**Dimensions:**



Shadowline

