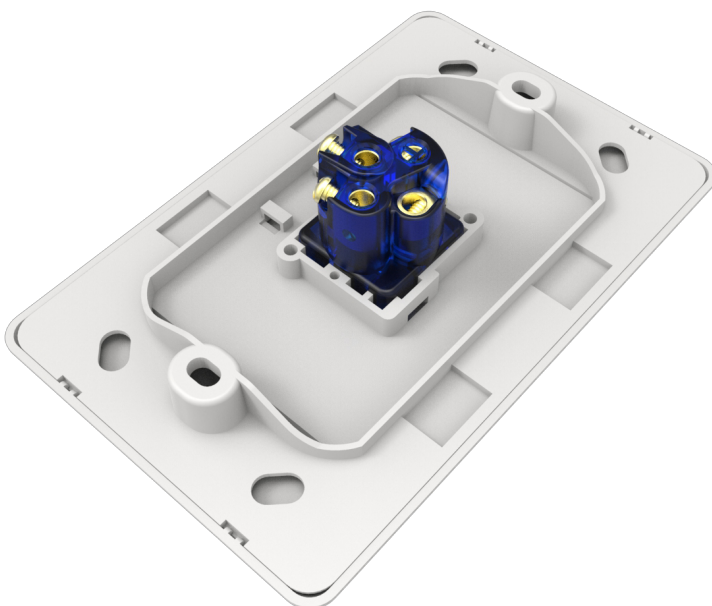


# Voltex Switch 1 gang 250V 16AX - Shadowline

SLSW1



- ① Highly durable 100% virgin Polycarbonate material
- ② Superior high UV and 'ageing' resistance, for maximum long term crisp white appearance
- ③ Fully approved to all relevant Australian Standards
- ④ Multiple fixing points [6 in total] to suit all possible mounting applications.
- ⑤ Strong, robust flat and phillips screwheads
- ⑥ Proven switch mechanism design guarantees no midpoint sticking.



84

