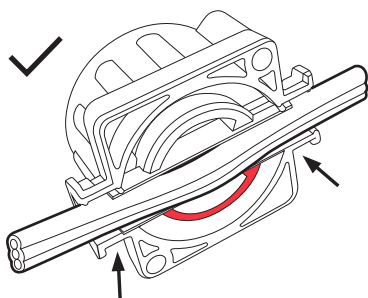


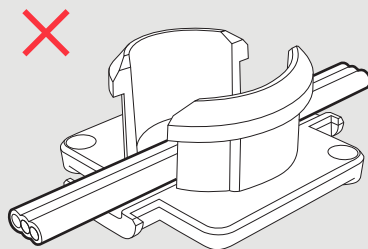
IMPORTANT READ BEFORE INSTALL

FOR **VOLTEX**® TWIST CONNECT

TO ENSURE A RELIABLE CONNECTION:



Cable **MUST** be firmly pressed down onto the blades and laid straight and flat in the channel to prevent misalignment of the blades



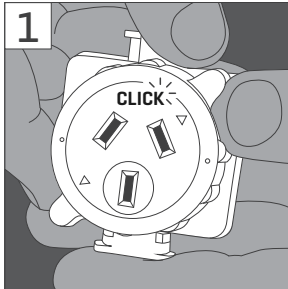
Cable **MUST** be laid on the blades, **NOT** the base



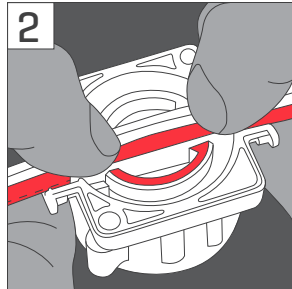
SEE INSTALLATION PROCESS
ON THE BACK

INSTALLATION PROCESS

Please follow this process to ensure a correct installation.

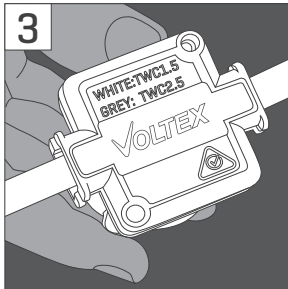


1 Untwist the collar until it clicks

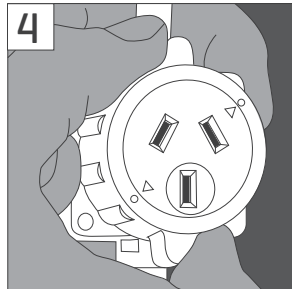


2 Remove the base and push the cable into the channel

[make sure to check polarity and to press well]

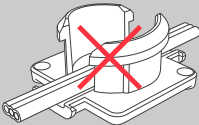


3 Reinsert the base

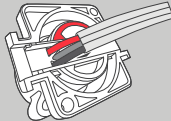


4 Twist the collar until the arrows align

NOTE: Do not use on solid core cable or cable with aged / hardened insulation.



Do not place the cable on the base



Terminate end of cable run by placing single-insulated cores into holes as shown



For instructional video scan the QR



AU