

SUIT

YOUR

PASSION

VOLTEX® APPAREL



AU

☎ 1300 722 275
✉ sales@voltex.com
📍 www.voltex.com

NZ

☎ 0800 55 66 33
✉ sales@voltex.com
📍 www.voltex.com

NEW

VOLTEX[®]
APPAREL

**SUIT
YOUR
PASSION**

SCAN TO VIEW
THE FULL RANGE





CREW NECK **T-SHIRT**

CREW NECK T-SHIRT

The Voltex Crew Neck T-Shirt is soft, stretchy, and super durable, with tough seam stitching and great shape recovery. It's specially designed for the ultimate comfort fit and maximum freedom of movement. So, whether you're on the tools, in the gym or relaxing at home, you'll look the part in your Voltex T-Shirt.



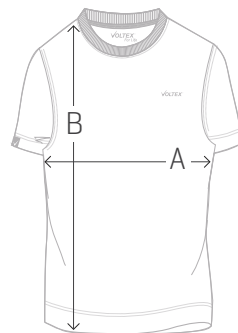
MATERIALS:

57% Cotton, 38% Polyester, 5% Elastane

SIZING CHART:

cm	S	M	L	XL	XXL
A	51.5	54	56.5	59	60.5
B	71	73	75	77	79

DOUBLE THE **A** MEASUREMENT FOR FULL CHEST



HOW TO MEASURE:

Chest [A]: Measure from underarm to underarm, ensuring the tape is horizontal

Height [B]: Measure from your hips to where your shoulder meets your neck, keeping the tape vertical

Not sure which size to choose?

If you prefer a tighter fit, the smaller size will do wonders. Prefer the loosey goosey feel? Choose the larger size.



SCAN TO ORDER



VOLTEX

PIQUE
POLO

PIQUE POLO

Voltex's Pique Polo is created from 100% Polyester yarn, resulting in a breathable easy-care material that will keep you cool and stylish all summer. The textured weave is renowned for hiding sweat stains too, so this Voltex polo will have you looking the part in comfort. Whether you're flat out on the tools or suddenly needing to fit in another quote visit, this is the ultimate tradies Polo shirt.



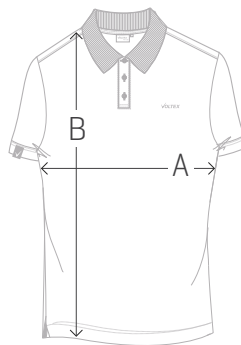
MATERIALS:

100% Polyester

SIZING CHART:

cm	S	M	L	XL	XXL
A	50	52.5	55	57.5	60
B	71	73	75	77	79

DOUBLE THE **A** MEASUREMENT FOR FULL CHEST



HOW TO MEASURE:

Chest [A]: Measure from underarm to underarm, ensuring the tape is horizontal

Height [B]: Measure from your hips to where your shoulder meets your neck, keeping the tape vertical

Not sure which size to choose?

If you prefer a tighter fit, the smaller size will do wonders. Prefer the loosey goosey feel? Choose the larger size.



SCAN TO ORDER



TECH HOODIE

TECH HOODIE

The Voltex Tech Hoodie uses a super durable cotton, polyester and elastane blend with excellent shape recovery, making it ideal for total freedom of movement when you're on the tools. But whether it's for tradie roles, for your favourite urban hangout or for excursions off the beaten path, to dress well always helps you to do well, and Voltex is keen to help there.



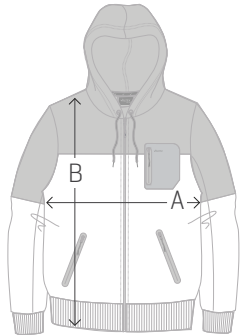
MATERIALS:

71% Cotton, 22% Polyester, 7% Elastane

SIZING CHART:

cm	S	M	L	XL	XXL
A	52.5	55	57.5	60	62.5
B	70	72	74	76	78

DOUBLE THE **A** MEASUREMENT FOR FULL CHEST



HOW TO MEASURE:

Chest [A]: Measure from underarm to underarm, ensuring the tape is horizontal

Height [B]: Measure from your hips to where your shoulder meets your neck, keeping the tape vertical

Not sure which size to choose?

If you prefer a tighter fit, the smaller size will do wonders. Prefer the loosey goosey feel? Choose the larger size.



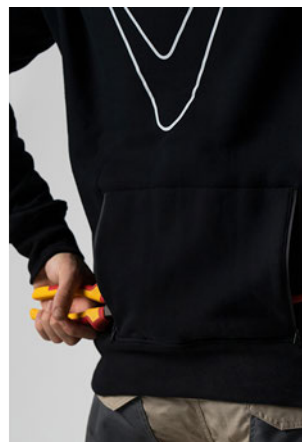
SCAN TO ORDER



HOODIE JUMPER

HOODIE JUMPER

This premium Hoodie Jumper is the ultimate way to bridge the gap between professional tradie wear and leisure. It keeps you warm, comfortable and stylish when you're braving the rain, sleet, cold, wind, and all the rest of it, wherever you are. From the large front thru-pockets to the sleeve pockets, the pen holders, and the rear zipped pouches, this is ideal for total freedom of movement and maximum serviceability, but it gives you the best of quality streetwear fashion, sleek and presentable, in keeping with gear for the greatest of all trades.



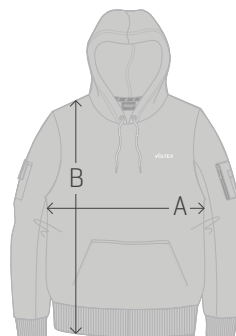
MATERIALS:

56% Cotton, 54% Polyester

SIZING CHART:

cm	M	L	XL	XXL
A	58	61	64	67
B	79	82	85	88

DOUBLE THE **A** MEASUREMENT FOR FULL CHEST



HOW TO MEASURE:

Chest [A]: Measure from underarm to underarm, ensuring the tape is horizontal

Height [B]: Measure from your hips to where your shoulder meets your neck, keeping the tape vertical

Not sure which size to choose?

If you prefer a tighter fit, the smaller size will do wonders. Prefer the loosey goosey feel? Choose the larger size.



SCAN TO ORDER



RIBBED PADDED JACKET

RIBBED PADDED JACKET

The Voltex Ribbed Padded Jacket is crafted from high-grade Nylon, to give you excellent water resistance in outdoors job sites, and to make it easy to keep clean. The insulation padding is RDS Certified responsibly sourced duck down, because of all insulations, 'down' still provides the greatest warmth for the least weight. It has a high quality front zip, 2 outside and one inside pockets [all zipped] a special pen pouch, and a rain hood. So, this Jacket is super tradie-functional, and gives you exceptional warmth and wind resistance, and the comfort you need.



MATERIALS:

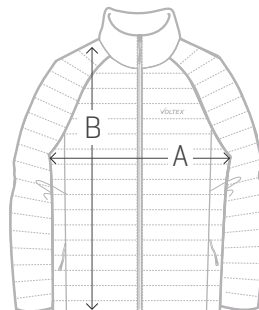
Shell & Lining: 100% Nylon, Padding: Duckdown



SIZING CHART:

cm	S	M	L	XL	XXL
A	50	52.5	55	57.5	60
B	71	73	75	77	79

DOUBLE THE **A** MEASUREMENT FOR FULL CHEST



HOW TO MEASURE:

Chest [A]: Measure from underarm to underarm, ensuring the tape is horizontal

Height [B]: Measure from your hips to where your shoulder meets your neck, keeping the tape vertical

Not sure which size to choose?

If you prefer a tighter fit, the smaller size will do wonders.

Prefer the loosey goosey feel? Choose the larger size.



SCAN TO ORDER



TECH JOGGERS

TECH JOGGERS

These feather-light trackies have a 60/40 mix of Cotton/Poly, and they're specially designed for the ultimate in comfort fit. These will help you maximise your efficiency levels, with their brushed fleece inner finish and classy cuffed ankles, a premium quality waist tie, zipper pockets, and a stretch crotch Panel that allows for the fullest range of movement. So, whether you're out on the tools or heading to the gym, or just slouching on the couch after a hard day's yakka, the Voltex jogger trousers will keep looking stylish and feeling comfortable.

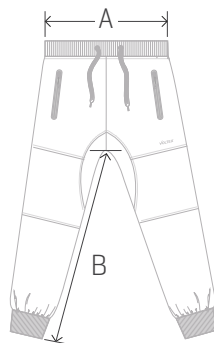


MATERIALS:

60% Cotton, 40% Polyester

SIZING CHART:

cm	S	M	L	XL	XXL
A	76	81	86	91	97
B	79	79	79	79	79



HOW TO MEASURE:

Waist [A]: Measure all around your hips [or waist]


Legs [B]: Measure from your shorts crotch area, down the inside of your leg

Not sure which size to choose?

If you prefer a tighter fit, the smaller size will do wonders. Prefer the loosey goosey feel? Choose the larger size.



SCAN TO ORDER

A close-up photograph of a person's hand resting on their hip. They are wearing black athletic shorts. A zipper is visible on the side of the shorts, and a small, light-colored logo is on the pocket. The background is a plain, light color.

TECH *JOGGER* **SHORTS**

TECH JOGGER SHORTS

These lightweight activewear jogger shorts use a cotton / polyester blend fabric for maximum durability and softness. They have a stretch crotch panel that allows for the fullest range of movement, a premium quality waist tie, two front zipper pockets, and they're machine washable. Together it makes these shorts the ideal choice for any activity. Whether you're on the tools or on your days off, they give you quality, style, and comfort.

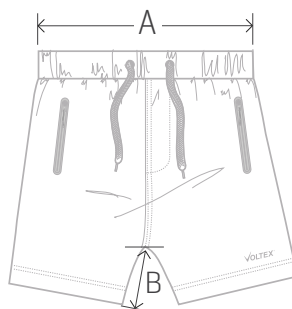


MATERIALS:

60% Cotton, 40% Polyester

SIZING CHART:

cm	S	M	L	XL	XXL
A	76	81	86	91	97
B	15	16	17	18	19



HOW TO MEASURE:

Waist [A]: Measure all around your hips [or waist]

Shorts [B]: Measure from your shorts crotch area, down the inside of your leg

Not sure which size to choose?

If you prefer a tighter fit, the smaller size will do wonders. Prefer the loosey goosey feel? Choose the larger size.



SCAN TO ORDER

A person is shown from the waist down, wearing a blue t-shirt and tan cargo trousers. The trousers have multiple pockets, including a large side pocket on the left leg where a red and yellow screwdriver is tucked. The person's hands are resting on their hips. The background is a plain, light gray.

RIPSTOP *CARGO* **TROUSERS**

RIPSTOP CARGO TROUSERS

Developed for Sparkies and Australian summers, these Ripstop Cargo Trousers are 100% CORDURA® fabric. The CORDURA® brand is legendary for performance-oriented fabric technology. It's strong, versatile, long lasting, and renowned for enhanced abrasion resistance and amazing tear strength. We specified CORDURA® because you need tough, reliable work gear and this 14-pocket design with knee protection and side leg zips (for ventilation if required) will get you to mission accomplished on any job, in style and comfort, with superb functionality.



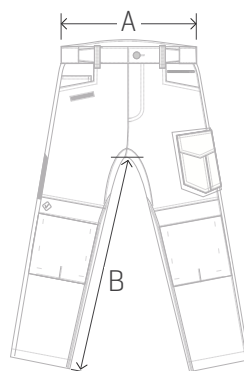
MATERIALS:

65% Polyester, 35% Cotton



SIZING CHART:

cm	S	M	L	XL	XXL
A	76	81	86	91	97
B	79	79	79	79	79



HOW TO MEASURE:

Waist [A]: Measure all around your hips (or waist)

Legs [B]: Measure from your shorts crotch area, down the inside of your leg

Not sure which size to choose?

If you prefer a tighter fit, the smaller size will do wonders. Prefer the loosey goosey feel? Choose the larger size.



SCAN TO ORDER

A person is shown from the waist down, wearing tan cargo shorts with a matching belt. The shorts have multiple pockets, including a large side pocket on the left holding a red-handled screwdriver and a pair of pliers. The person is also holding a yellow and black tape measure in their right hand. The background is a plain, light gray.

RIPSTOP *CARGO* **SHORTS**

RIPSTOP CARGO SHORTS

These Cargo Shorts have been developed for Sparkies and Australian summers, using CORDURA® fabric. The CORDURA® brand is legendary for performance-oriented fabric technology. It's strong, versatile, long lasting, and renowned for enhanced abrasion resistance and amazing tear strength. We specified CORDURA® because you need tough, practical work shorts, and this 10-pocket design will get your mission accomplished in maximum style, superb functionality, and the comfort you need.



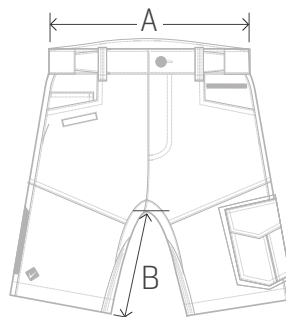
MATERIALS:

65% Polyester, 35% Cotton



SIZING CHART:

cm	S	M	L	XL	XXL
A	76	81	86	91	97
B	20.5	21.5	22.5	23.5	24.5



HOW TO MEASURE:

Waist [A]: Measure all around your hips [or waist]

Shorts [B]: Measure from your shorts crotch area, down the inside of your leg

Not sure which size to choose?

If you prefer a tighter fit, the smaller size will do wonders. Prefer the loosey goosey feel? Choose the larger size.



SCAN TO ORDER

VOLTEX® APPAREL

SUIT YOUR PASSION

VOLTEX®
ELECTRICAL ACCESSORIES

AU ☎ 1300 722 275
✉ sales@voltex.com
➦ www.voltex.com

NZ ☎ 0800 55 66 33
✉ sales@voltex.com
➦ www.voltex.com