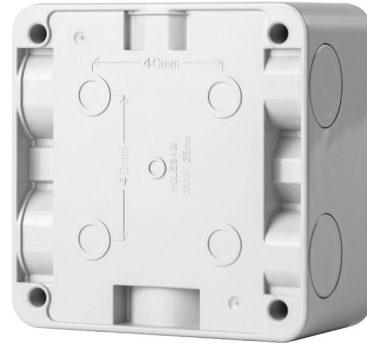




WPS220V2 FRONT



WPS220V2 BACK

IP66 rated, 20A Double Pole Compact Isolator Switch suitable for a wide range of applications.

- Pad-lockable switch in the OFF position.
- IP66 rated.
- Stainless steel cover screws.
- 20mm & 25mm cable entries.
  - Pips for cover screws and mounting screws.
  - Double screw cable connector.
  - Drill template for mounting holes.

**Technical Specifications**

Current Rating	20A
Number of Poles	Double
Rated Voltage	250V AC 50Hz
IP Rating	IP66
Motor Rating	M100 AC-23A
Material	UV Resistant PC

**Compliance**

AS 3133  
 IEC 60947-3  
 IEC 60947-1  
 AS 60529



**Dimensions**

