



WPS363V2 FRONT



WPS363V2 BACK

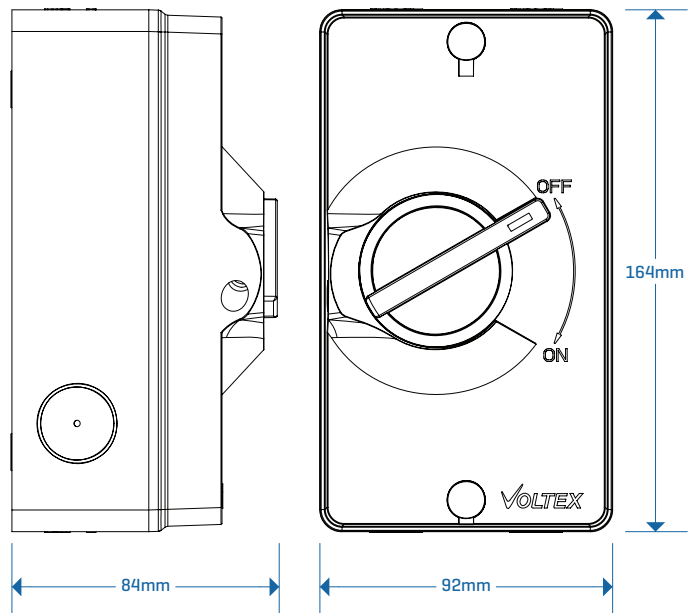
IP66 rated 63A Three Pole Isolator Switch suitable for a wide range of applications.

- Pad-lockable switch in the OFF position.
- IP66 rated.
- Stainless steel cover screws.
- Thread 25mm cable entries – 2 bottom entries and 2 top entries.
- 2 x 25mm rear entry cutouts
- 2 x 25mm side entry cutouts (left and right)
- Supplied with
 - Pips for cover screws and mounting screws.
 - 25-20mm threaded reducers.
 - Drill template for mounting holes.

Technical Specifications

Current Rating	63A
Number of Poles	Three
Rated Voltage	440V AC 50Hz
IP Rating	IP66
Motor Rating	M220 AC-23A
Material	UV Resistant PC

Dimensions



Compliance

AS 60947.3
AS/NZS 60947.1
AS 60529

