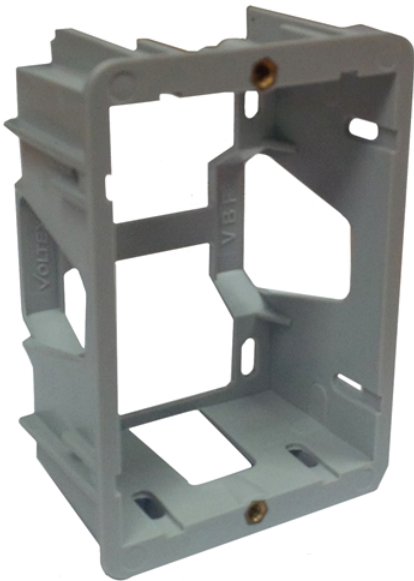


Flush Box & Mounting Clips



Code: VFB

Standard 1 Gang Flush Box (Brass Threads)

- Extra open space for ease of wire connections
- Metal threads
- Slots for Screw and Nail fixing
- Robust plastic
- Compatible with all standard gang plates

Dimensions:

Height: 95mm

Width: 58mm

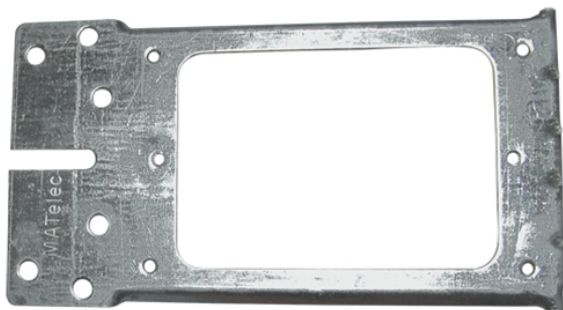
Depth: 50mm



Code: PB00

C-Clip Mounting Bracket 100PK

- All brackets are heavy duty material thickness
- All brackets are hot dipped galvanised
- Compatible with all standard gang plates



Code: PB10

Right Angle Mounting Bracket 25PK

- All brackets are heavy duty material thickness
- All brackets are hot dipped galvanised
- Compatible with all standard gang plates